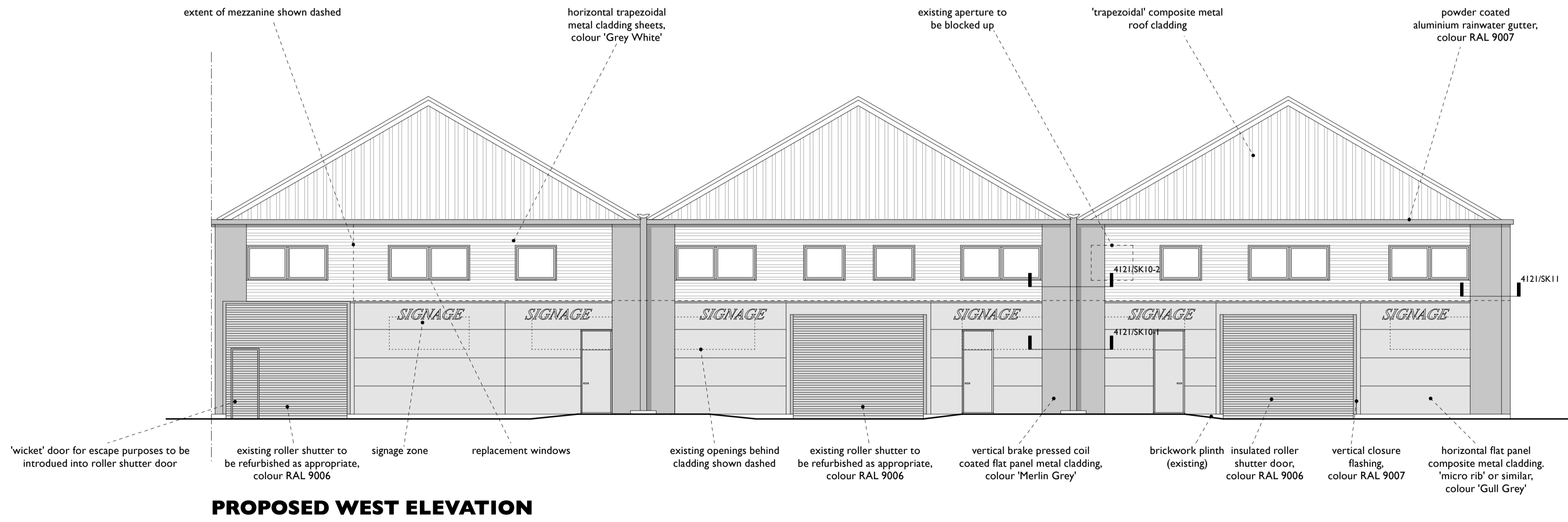


PROPOSED SOUTH ELEVATION



PROPOSED WEST ELEVATION

- REV J: PERSONNEL DOOR TO REAR OF EXISTING UNIT 4 REPOSITIONED
MG 06.10.08
- REV I: PERSONNEL DOOR TO UNIT 4B SOUTH ELEVATION REMOVED, WEST ELEVATION DOOR REINSTATED
MG 03.10.08
- REV H: PERSONNEL DOORS TO UNIT 4B REMOVED
MG 03.10.08
- REV G: PERSONNEL DOORS AND WINDOWS UPDATED TO WEST ELEVATION
MG 02.10.08
- REV F: SECTIONAL DOORS / PERSONEL DOORS AMENDED
MG 27.08.08
- REV E: EXTRA DOWNPIPE ADDED. EXTENT OF NEW ROOFLIGHTS AMENDED
MG 22.07.08
- REV D: CLADDING UPDATED, PROPOSED COLOURS ADDED, ROLLER SHUTTER / PERSONEL DOORS ADDED, EXISTING WINDOW APERTURES NOW SHOWN
MG 25.06.08
- REV C: CLADDING UPDATED, DETAIL REFERENCES ADDED, ROOFLIGHT ARRANGEMENT AMENDED
JS 06.05.08
- REV B: GENERAL UPDATE
MAG 21.04.08
- REV A: ESCAPES ADDED, ROLLER SHUTTER TO UNIT 4B RELOCATED
JS 13.03.08

This drawing remains the copyright of the Architect. The drawing is not to be scaled and any dimensional discrepancies are to be brought to the attention of the Architect. All figured dimensions are to be checked on site prior to construction commencing.

Alun R Nicholas RIBA
Chartered Architects

47 Clark Street
Stourbridge
West Midlands DY8 3UF
01384 371243 07770 353931
alun.nicholas@virgin.net

Gemini Business Park, Stourport Road, Kidderminster
Gemini Properties UK Ltd.

Unit 4: Proposed Redecorated Elevations

4121/07j
1:100 @ A1